

October 13, 2025

PeaceHealth St. Joseph Medical Center Master Facility Plan Community Forum



<div> <div>Agenda</div> <div>  <div> <div>PeaceHealth</div> <div>Sensitivity: General Business Use. This document</div> </div> </div> </div>	Time	Topic	Presenter
	5 mins	Welcome Land Acknowledgement	Amy Drury, Director Marketing & Communications & Rachel Lucy, Director Community Health
	10 mins	Project Overview	Charles Prosper, Chief Executive, Northwest
	5 mins	Airlift Northwest	Jeffrey Richey, Chief Air Medical Officer, Airlift Northwest
	10 mins	Construction Update	Kim Lain, Director Planning, Design & Construction
	10 mins	Commitment to Community Benefit	Rachel Lucy, Director Community Health
	5 mins	Construction Communication	Amy Drury, Director Marketing & Communications
	15 mins	Facilitated Q&A	Amy Drury, Director Marketing & Communications

Welcome & Land Acknowledgement

Amy Drury

Director, Marketing &
Communications

Coast Salish Land Acknowledgement

We, PeaceHealth, acknowledge we provide care on the traditional, ancestral, and unceded territory of Coast Salish People who have been the spiritual caretakers of these lands since time immemorial.

The Coast Salish way of life, cultural values, and respect for the land and waterways are alive, strong, and resilient.

We honor and accept the responsibility of being in continuous healing relationship as one people.

Community Need

Chuck Prosper, Chief Executive, Northwest



We're expanding our PeaceHealth St. Joseph Medical Center campus to ensure we can provide the best care, close to home for our growing and changing community.

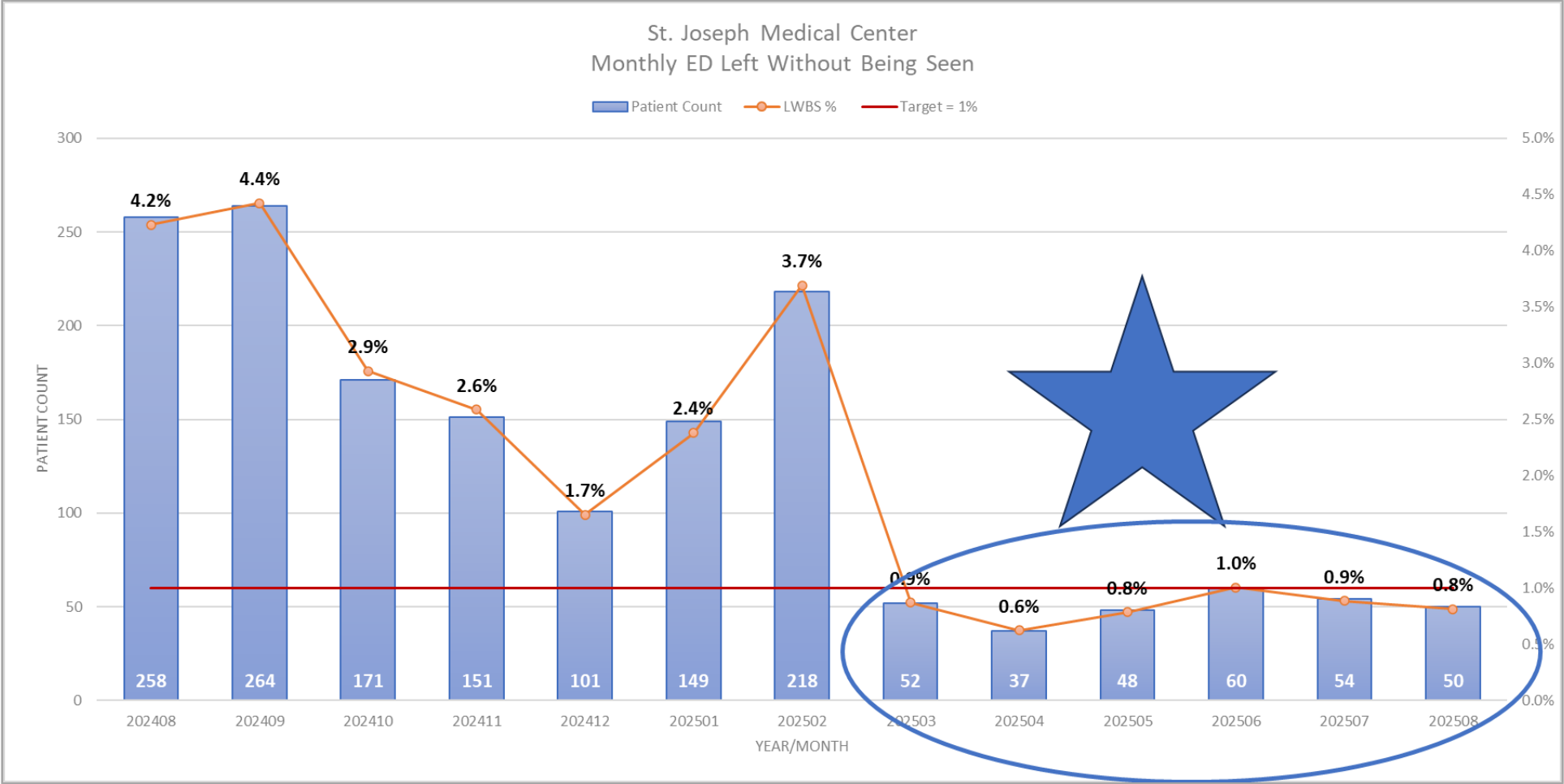
History of the Project

- Timeline of project with the Washington State Department of Health and City of Bellingham
- Community Forum – the intent of the meeting, our process for inviting a broad spectrum of Bellingham with an emphasis on adjacent neighborhood associations
- Meeting summary and key questions & answers regarding the project will be available in writing afterward
- Focus on good neighbor relations throughout the project

Current updates

- Comments from Spring 2025 Session
- Emergency Department Capacity and Wait Times
- Legislation Impacting Healthcare Coverage
 - Medicaid and Medicare
 - Affordable Care Act Plan Subsidies

Emergency Room Access & Efficiency



Door to Provider: 12 minutes

Project Overview

Chuck Prosper, Chief Executive, Northwest



Building the Peter Paulsen Pavilion

PeaceHealth St. Joseph is investing in the health of our community by expanding and renovating our medical center campus—totaling 120,000 square feet and six floors! Peter Paulsen, a former Bellingham resident was inspired to give a gift of \$50 million to launch this historic effort following the incredible contributions from many other community leaders. The new pavilion will feature:

A Rooftop Helipad
Improving patient safety & health outcomes

Floors 4-5
Women’s and Children’s Services

Floors 2-3
Patient care rooms

Floor 1
Modern, unified Emergency Department

Ground Floor
Lobby, Community Center and Healing Garden

120,000

Square feet in a modern, high-tech pavilion.

80

New patient rooms with space specifically designed for families.

6

New floors provide optimal space to care for our community.

2

Floors dedicated to Women and Children’s Services.

1

Modern, unified Emergency Department.

West Pavilion Project Components

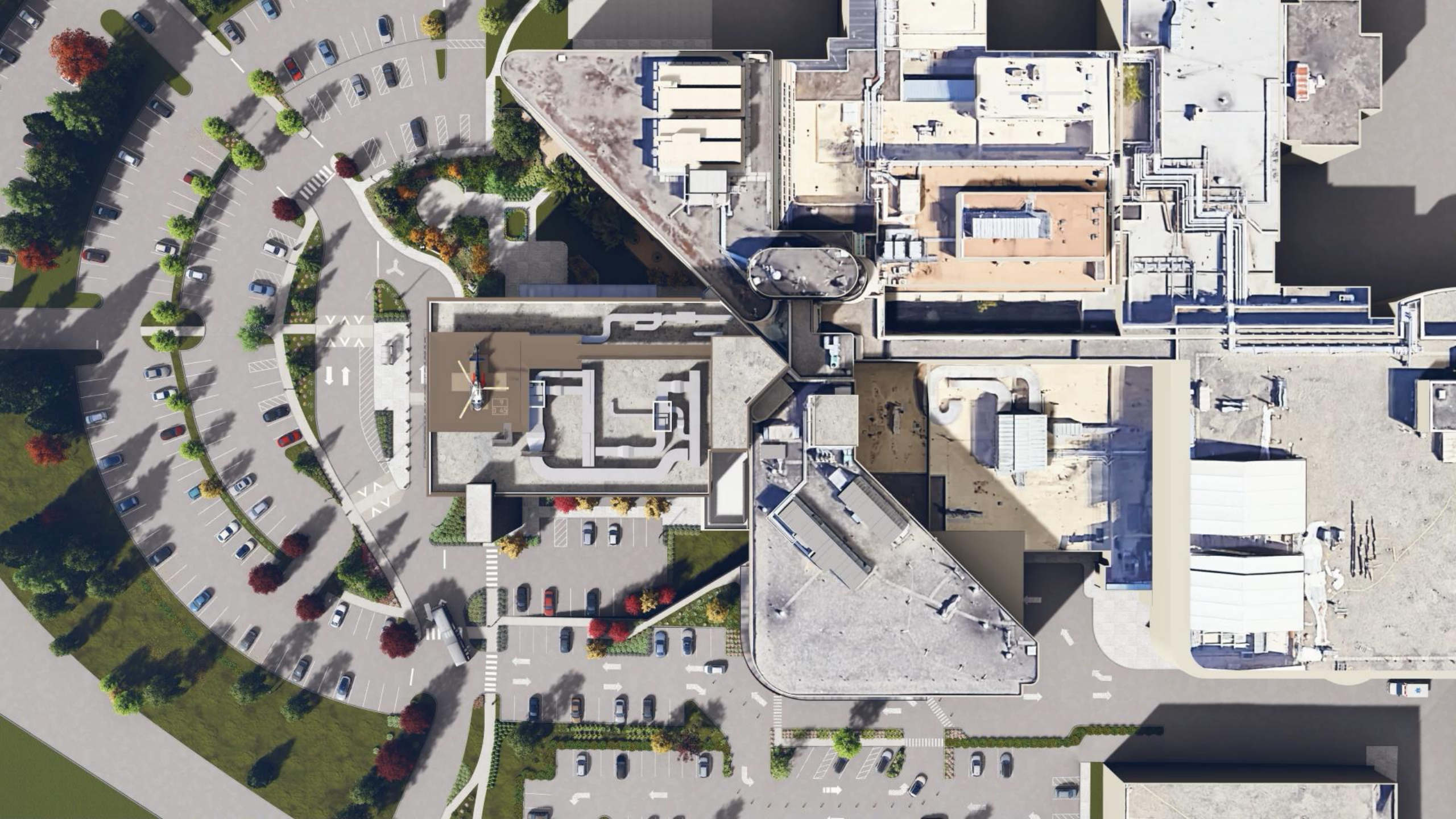
- Remodel of North and South Patient Towers
- Emergency Department upgrade and expansion
- Relocation and upgrade of Childbirth Center
- Central Utility Plant addition
- Improvements to Squalicum Parkway
- Six-floor addition with rooftop helipad



West Pavilion Rendering

- Caregiver and Physician designed
- Exceeds Energy Code Requirements
- Larger Drop-Off Canopy
- Accessibility Access Prioritized
- West Pavilion Animation







West Pavilion Exterior



Emergency Department



Main Lobby/Waiting Area



Lobby & Reception





Emergency Department Entry



Medical/Surgical Patient Room



Labor/Delivery Patient Room

Airlift Northwest

Jeffrey Richey, Chief Air Medical Officer

- Airlift Northwest / Review of Services
- Current Accreditation
- Updating Flight team Quarters



Airlift Northwest

- Current State:
Land at the ground helipad and take an ambulance to the ED
- New tower helipad will give the flight teams direct access to the ED which will save time and improve outcomes for the patients where seconds count in an emergency
- Cardiac, Stroke and Trauma



Construction Update

Kim Lain, Director, Planning, Design & Construction

Upcoming Construction Activities on the St Joseph Hospital Campus –

- Road Improvements on Squalicum Parkway next to the St Joseph Campus:
 - New sidewalk and bike lane at roadway will open in October
 - New sidewalk from Squalicum crosswalk will connect to sidewalks on campus for continuous pedestrian pathway to future hospital entrance
- Peter Paulsen Pavilion:
 - Site demolition, excavation and utilities installation for new tower addition are underway
 - Infrastructure upgrades at the Central Utility Plant are in progress
- Sitework Improvements for vehicle and pedestrian flow:
 - Pedestrian pathway improvements at Medical Office Building/Quest lab are in progress
 - Northwest Medical Center parking lot and Emergency Dept driveway, parking and drop-off area improvements
- ADA Parking – Accessible parking onsite has been maintained during construction

Central Utility Plant Upgrades



Squalicum Parkway & Campus Pedestrian and Bicycle Pathway Improvements



Site Excavation at St Joseph Hospital



Site of Future Peter Paulsen Pavilion



Commitment to Community Benefit

Rachel Lucy, Director, Community Health

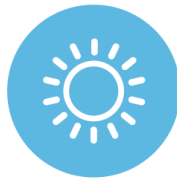
Our pillars of community health

Ensure that we are contributing to a healthier community for all.



HOME

Improve access to service-enriched housing



HOPE

Increase education, access to treatment and prevention of dependence



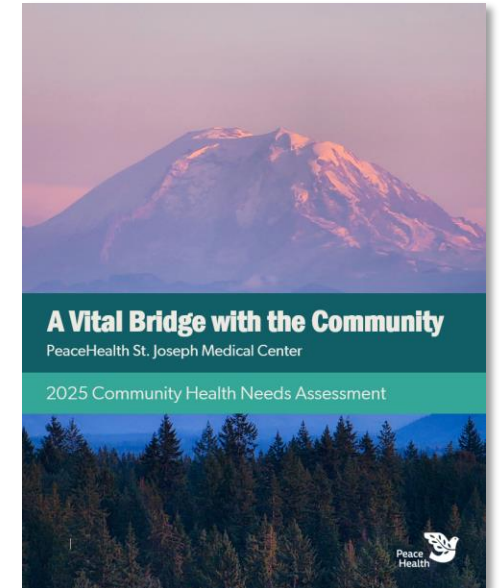
CARE

Expand knowledge, access and engagement with community caregivers



NOURISH

Address food insecurities to enhance family and child well-being



Community Benefit in Whatcom

Driven by our belief that good health, prevention and community wellbeing are a fundamental right, we work with communities to provide HOPE, CARE, HOUSING and NOURISHMENT.

2025 Direct grants to community-based organizations totaled	\$1.3 Million
Charity Care	\$63.8 Million

Thriving Partnerships



The Way Station medical respite

Unity Care NW, Opportunity Council, PeaceHealth and Whatcom County celebrate the opening of The Way Station, a state-of-the-art health and hygiene facility dedicated to serving individuals experiencing homelessness in Bellingham. Respite includes 24/7 staffing of 17 beds.

Perinatal Health

The health of children and families is a central focus of community partnership. Programs:

Indigenous Life Givers program – a collaboration with NW Wash Indian Health Board

Paso Seguros at Catholic Community Services Villa Santa Fe for Spanish-speaking families, after childbirth. Mothers and families can access postpartum and newborn resources, weigh baby, feed baby and review educational materials.

Plan Madrinas – cultural support during childbirth

Construction Communication

Amy Drury, Director, Marketing & Communications

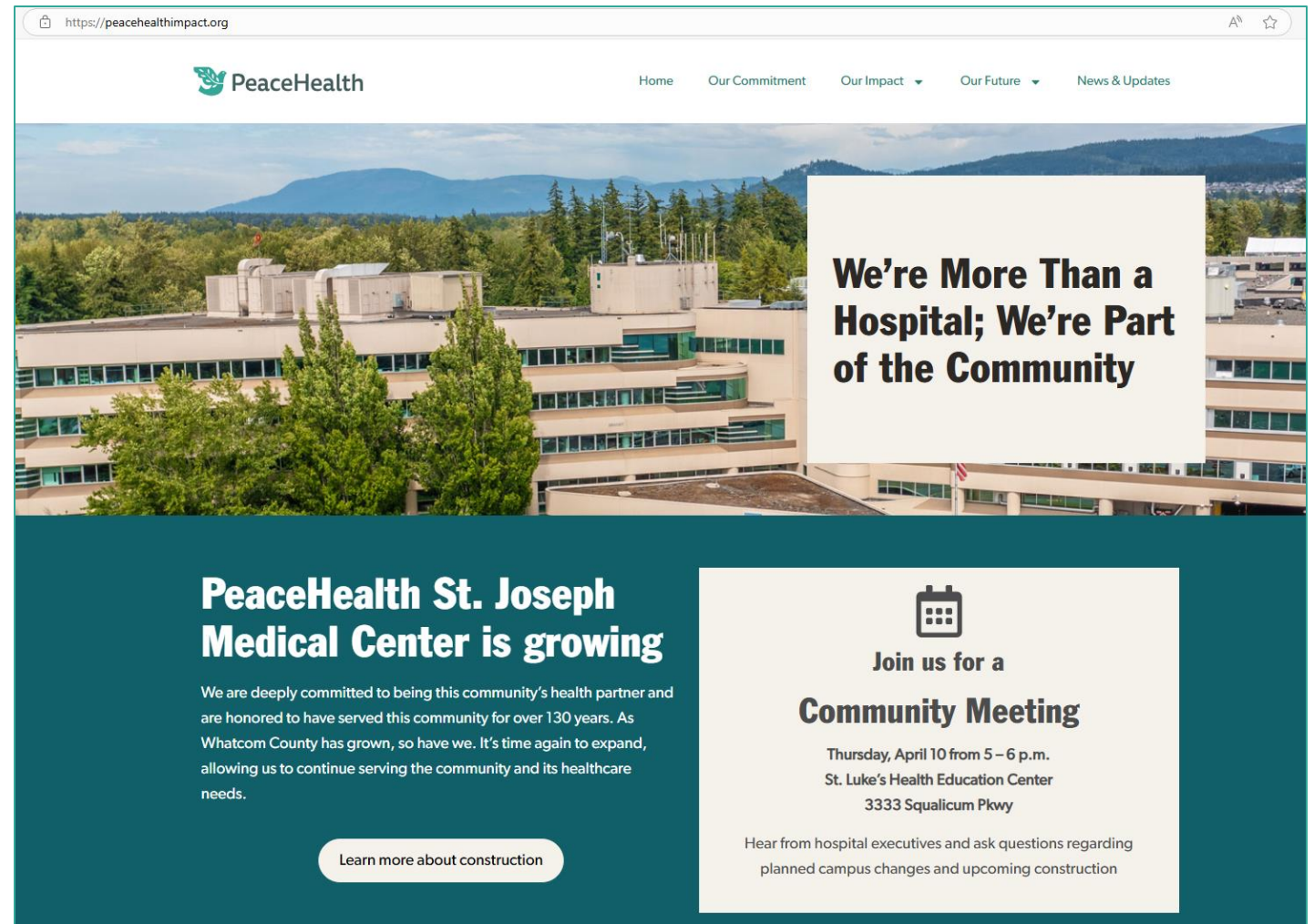
Ways to Stay in Touch

PeaceHealth Microsite

Weekly updates

PeaceHealth Impact - Whatcom

<https://peacehealthimpact.org/>



The screenshot displays the PeaceHealth Impact microsite. At the top, the PeaceHealth logo is on the left, and navigation links for Home, Our Commitment, Our Impact, Our Future, and News & Updates are on the right. The main visual is a large photograph of a multi-story hospital building with a modern design, surrounded by lush green trees. In the background, a range of blue mountains is visible under a clear sky. Overlaid on the right side of the image is a white text box with the message: **We're More Than a Hospital; We're Part of the Community**. Below the image, the page has a dark teal background. On the left, the heading **PeaceHealth St. Joseph Medical Center is growing** is followed by a paragraph: "We are deeply committed to being this community's health partner and are honored to have served this community for over 130 years. As Whatcom County has grown, so have we. It's time again to expand, allowing us to continue serving the community and its healthcare needs." A white button with the text "Learn more about construction" is positioned below this text. On the right, there is a white box containing a calendar icon, the text "Join us for a", the heading **Community Meeting**, the date and time "Thursday, April 10 from 5 – 6 p.m.", the location "St. Luke's Health Education Center", and the address "3333 Squalicum Pkwy". At the bottom of this box, it says "Hear from hospital executives and ask questions regarding planned campus changes and upcoming construction".

Construction updates



Learn more about construction



We're expanding



PeaceHealth St. Joseph Medical Center is growing to meet our community's needs

We are deeply committed to being this community's health partner and are honored to have served this community for over 130 years. As Whatcom County has grown, so have we. It's time again to expand, allowing us to continue serving the community and its healthcare needs.

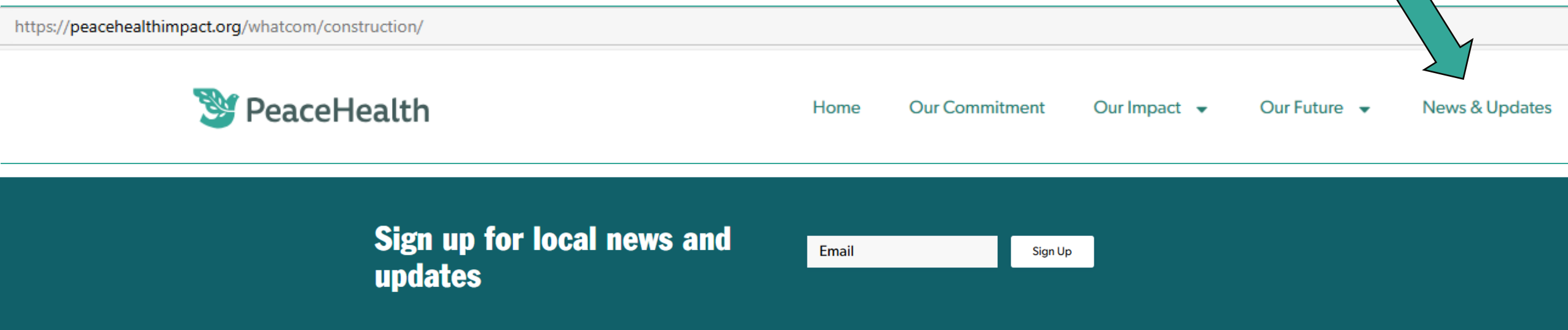
Please use the form below to submit any construction-related questions, concerns or comments.

Construction Timeline

The planning, permitting, and construction of new healthcare facilities is a lengthy process and requires numerous state and local approvals. Here is a summary of the work completed to date, along with a timeline for future construction.

 Future Timeline	 Completed Work
<i>Please note that the following dates are tentative and are subject to change.</i>	
April 2025: Preliminary construction on the West Pavillion begins.	
TBD: Phase two of Squalicum Parkway construction.	
TBD: West Pavillion construction ends.	
2028: West Pavillion opens to the public.	

To receive email updates, click on News & Updates at the top of the Construction page:



Or email us @ DLStJosMFPPlanning@peacehealth.org

To submit questions, comments or concerns, scroll to bottom of the Construction page:

Questions, concerns or comments?

Please use the form below to submit your questions, concerns or comments about construction at PeaceHealth St. Joseph Medical Center.

Name (Required)

First

Last

Email (Required)

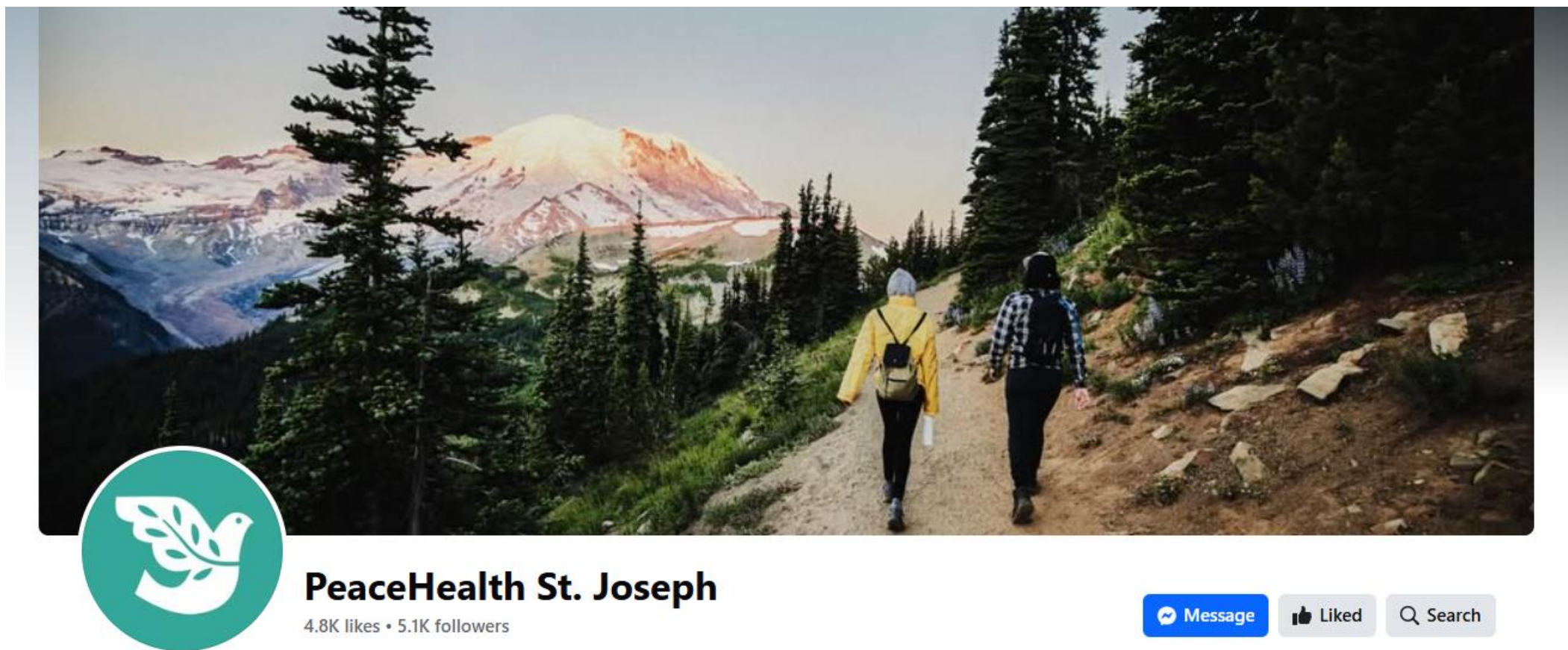
Enter Email

Confirm Email

Question(s) (Required)

Submit

Find us on Facebook: <https://www.facebook.com/PeaceHealthStJoseph>



PeaceHealth St. Joseph

4.8K likes • 5.1K followers

 Message

 Liked

 Search

Onsite Assistance for Patients and Visitors

Float Volunteers

Escort assistance for visitors and patients

7 a.m. – 7 p.m.

(360) 788-6300 or dial ext. 3111

Security is always available if you feel unsafe or need an escort to your vehicle

Q&A

Amy Drury, Director, Marketing & Communications, Northwest

Questions?



PeaceHealth

St. Joseph Medical Center

Appendix



PeaceHealth

St. Joseph Medical Center

Airlift Northwest

Bellingham Arrival / Departure Flight Procedures

Procedures for arrival & departure
St. Joseph's Hospital Bellingham

Airlift Northwest

Bellingham Arrival / Departure Flight Procedures

No Fly Area (See following slides)

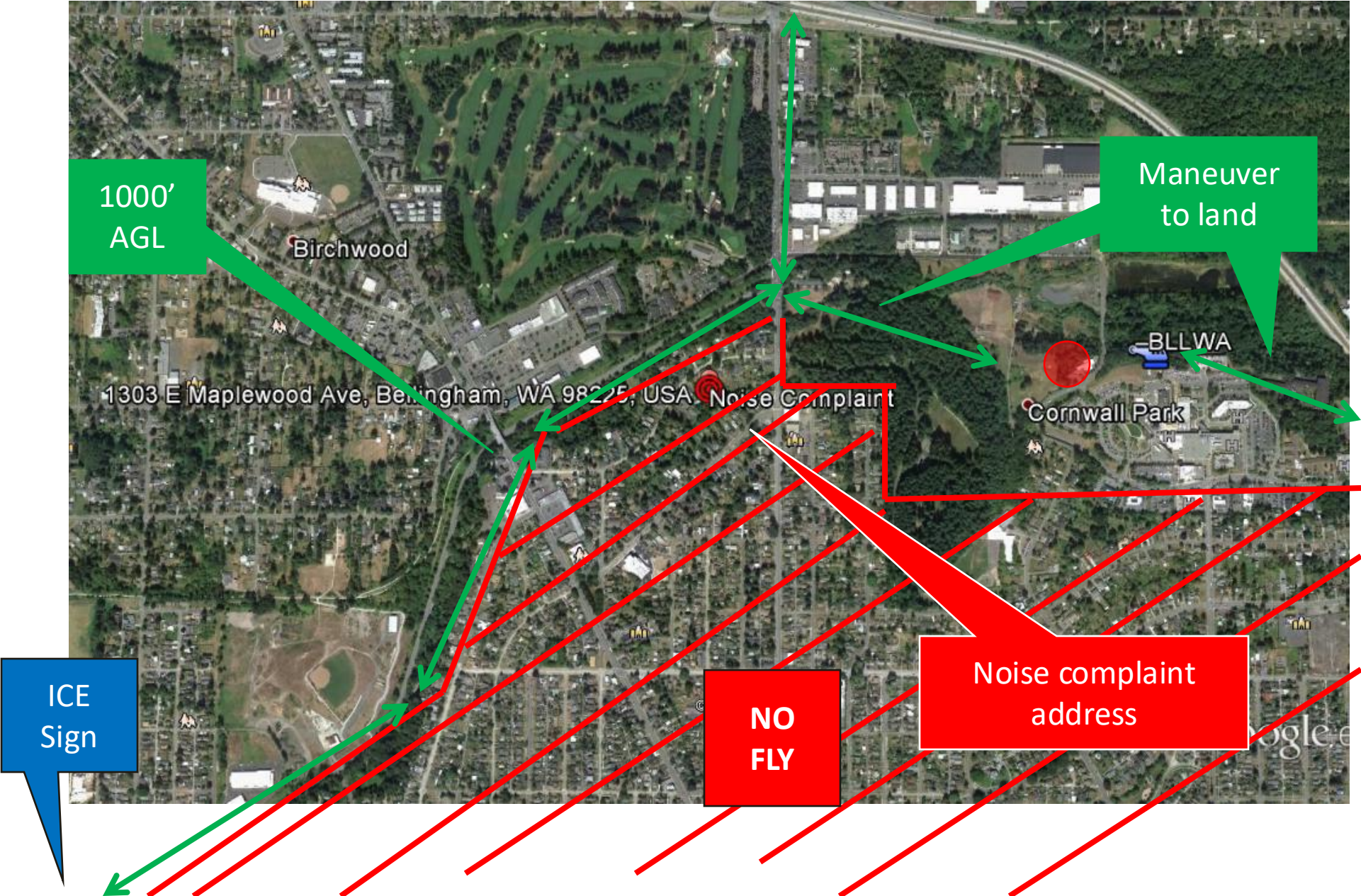
Avoid Area - Child Care Center

Maintain 1000 feet Above Ground Level
until in a position for a normal approach.
Maneuvering at lower altitudes for landing.

Bellingham Arrival / Departure Procedures



Bellingham Arrival / Departure Procedures



Bellingham Arrival / Departure Procedures

